



FD2510 SERIES

25x25x10mm

- Airflow: 1.40~2.50 CFM
- Static Pressure: 1.80~5.00 mm-H₂O
- Blade / Housing: Plastic Material UL 94-0 P.B.T.
- Lead Wire: UL1571 #28 AWG
- Weight: 8g

Model	Bearing	Rated Voltage	Operating Voltage Range	Power Consumption	Rated Speed	Max. Airflow	Max. Static Pressure	Noise	Life	Weight
		VDC	VDC	W	RPM	CFM	mm-H ₂ O	dB (A)	Hour	g
FD0525103B-2A	2B	5	4~7	0.25	7,000	1.40	1.80	16.5	80,000	8
FD0525105B-2A	2B		4~7	0.40	8,500	1.80	2.80	17.7	80,000	8
FD0525107B-2A	2B		4~7	0.55	10,000	2.10	3.80	22.5	75,000	8
FD0525109B-2A	2B		4~7	0.70	12,000	2.50	5.00	25.0	75,000	8
FD0525103S-1A	S	12	4~7	0.25	7,000	1.40	1.80	16.5	30,000	8
FD1225103B-2A	2B		7~17	0.72	7,000	1.40	1.80	18.0	80,000	8
FD1225105B-2A	2B		7~17	0.84	8,500	1.80	2.80	20.0	80,000	8
FD1225107B-2A	2B		7~17	1.08	10,000	2.10	3.50	22.1	75,000	8
FD1225109B-2A	2B	7~17	1.50	12,000	2.50	5.00	25.0	80,000	8	
FD1225103S-1A	S	7~17	0.72	7,000	1.40	1.80	16.4	30,000	8	

● 2B: 2-ball bearing BS: 1-ball 1-sleeve bearing S: sleeve bearing

Voltage Available

05 12 24 48 53

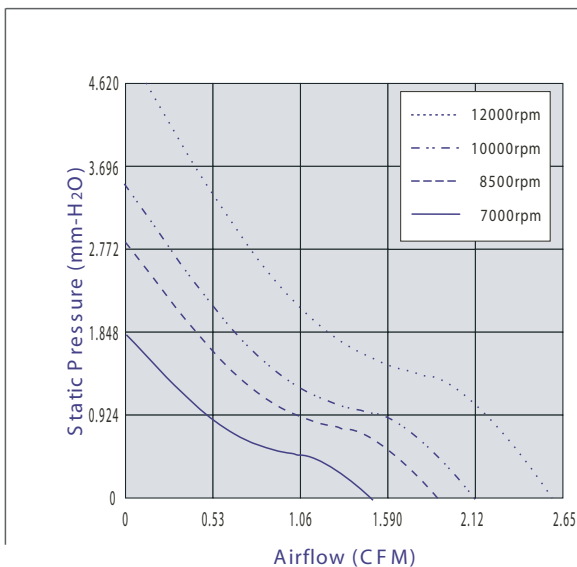
Bearing System Available

2B BS S

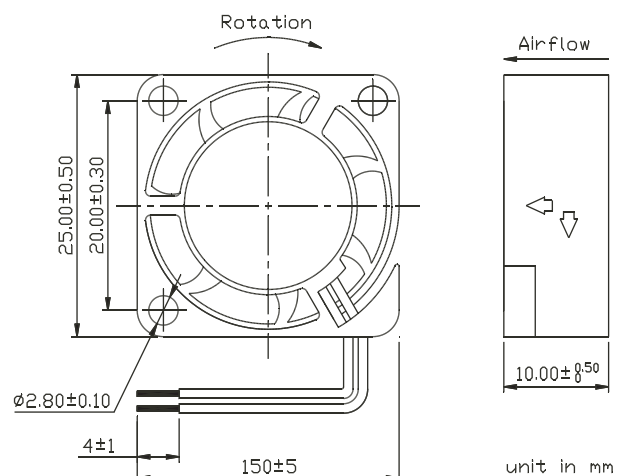
Function Available

N A I F R Q S T M V C P W

PERFORMANCE P-Q CURVE



OUTLINE DIMENSIONS



Customized Specifications are designed accordingly.

Specifications are subject to change without notice. Please visit Y.S. TECH web site at <http://www.ystech.com.tw> for updated information.

AXIAL DC FAN



European Thermodynamics Limited
Intelligent Thermal Management

<http://www.etchedyn.com>
email: info@etchedyn.com
26-27 Chartwell Drive Ind Est
S. Wigston
Leicester, LE18 2FL, UK

FD2510N SERIES

25x25x10mm

- Airflow: 1.40~2.40 CFM
- Static Pressure: 1.80~4.40 mm-H₂O
- Blade / Housing: Plastic Material UL 94-0 P.B.T.
- Lead Wire: UL1517 #28 AWG
- Weight: 8 g

Model	Bearing	Rated Voltage VDC	Operating Voltage Range VDC	Power Consumption W	Rated Speed RPM	Max. Airflow CFM	Max. Static Pressure mm-H ₂ O	Noise dB(A)	Life Hour	Weight g
FD0525103B-2A	2B	5	4~7	0.25	7,000	1.40	1.80	16.5	80,000	8
FD0525105B-2A	2B		4~7	0.40	8,500	1.70	2.70	18.6	80,000	8
FD0525107B-2A	2B		4~7	0.55	10,000	2.40	4.40	20.0	75,000	8

● 2B: 2-ball bearing BS: 1-ball 1-sleeve bearing S: sleeve bearing

Voltage Available

05 12 24 48 53

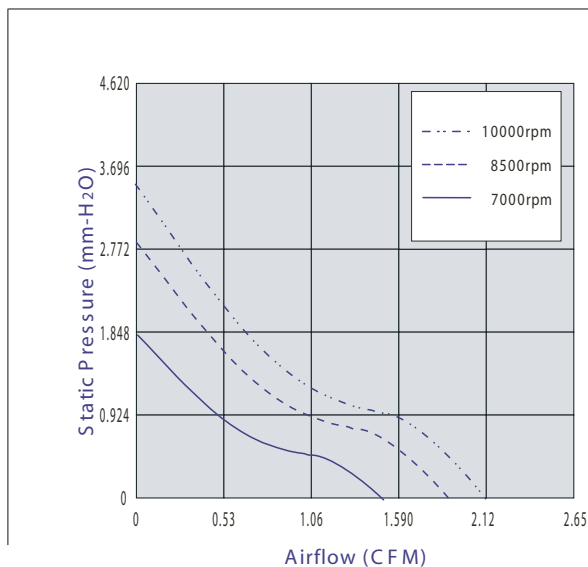
Bearing System Available

2B BS S

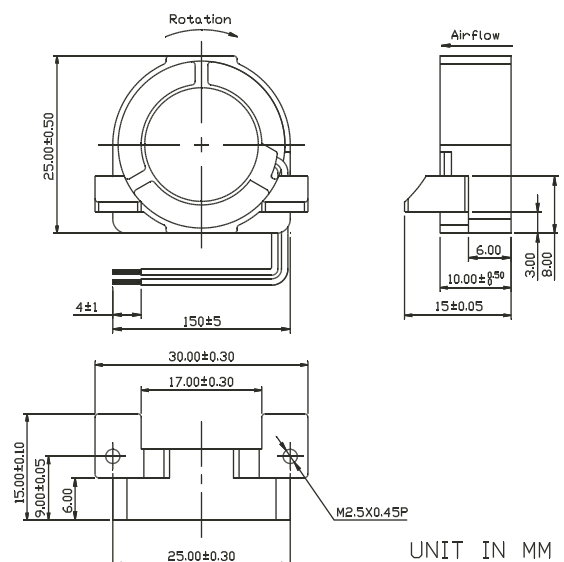
Function Available

NA I F R Q S T M V C P W

PERFORMANCE P-Q CURVE



OUTLINE DIMENSIONS



UNIT IN MM

Customized Specifications are designed accordingly.
Specifications are subject to change without notice. Please visit Y.S. TECH web site at <http://www.ys-tech.com.tw> for updated information.