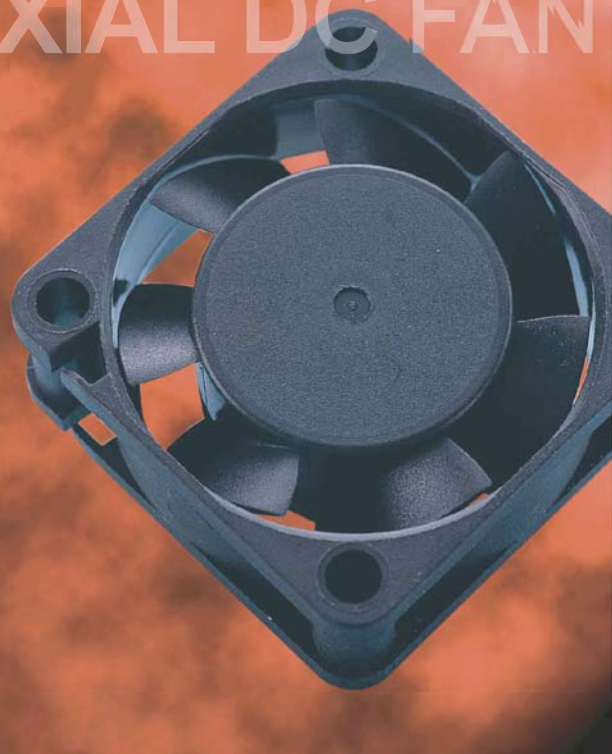


AXIAL DC FAN



<http://www.etsy.com>
 email: info@etsy.com
 26-27 Chartwell Drive Ind Est
 S.Wigston
 Leicester, LE18 2FL, UK

FD4015 SERIES

40x40x15mm

- Airflow: 6.00~9.50 CFM
- Static Pressure: 3.80~8.70 mm-H₂O
- Blade / Housing: Plastic Material UL 94-0 P.B.T.
- Lead Wire: UL1007 #26 AWG
- Weight: 26 g

Model	Bearing	Rated Voltage	Operating Voltage Range	Power Consumption	Rated Speed	Max. Airflow	Max. Static Pressure	Noise	Life	Weight
		VDC	VDC	W	RPM	CFM	mm-H ₂ O	dB(A)	Hour	g
FD0540155B-2A	2B	5	4~7	0.15	7,400	7.50	5.00	32.9	80,000	26
FD0540155B-2N	2B		4~7	0.15	7,400	7.50	5.00	32.9	80,000	26
FD1240153B-2A	2B		7~17	0.96	6,000	6.00	3.80	26.6	80,000	26
FD1240153B-2N	2B	12	7~17	0.96	6,000	6.00	3.80	26.6	80,000	26
FD1240155B-2A	2B		7~17	1.20	7,300	7.50	6.80	32.0	80,000	26
FD1240155B-2N	2B		7~17	1.20	7,300	7.50	6.80	32.0	80,000	26
FD1240157B-2A	2B		7~17	1.44	8,600	9.50	8.70	36.5	75,000	26
FD1240157B-2N	2B		7~17	1.44	8,600	9.50	8.70	36.5	75,000	26

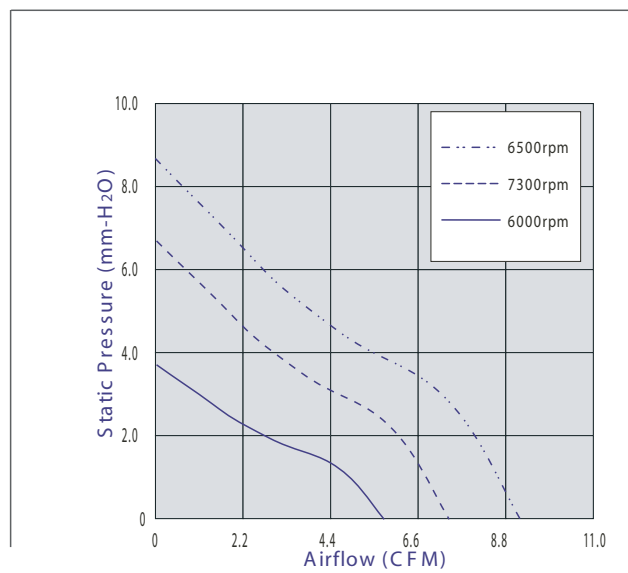
● 2B: 2-ball bearing BS: 1-ball 1-sleeve bearing S: sleeve bearing

Voltage Available
 05 12 24 48 53

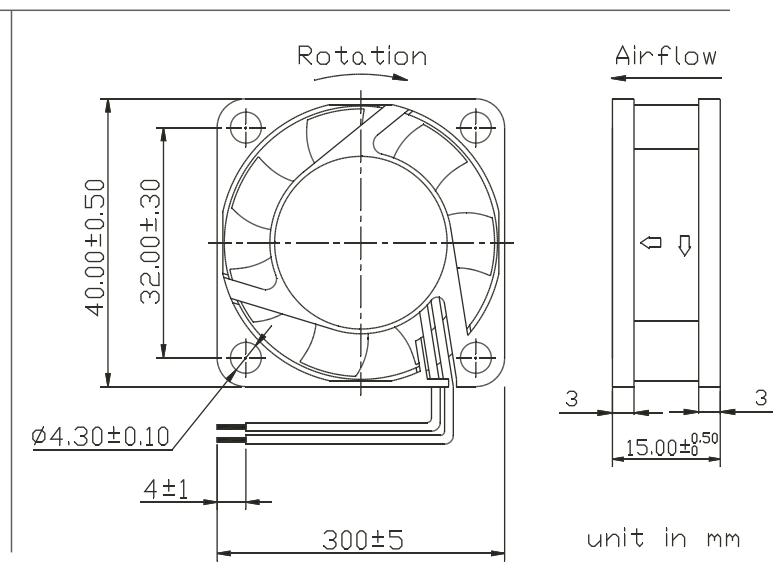
Bearing System Available
 2B BS S

Function Available
 N A I F R Q S T M V C P W

PERFORMANCE P-Q CURVE



OUTLINE DIMENSIONS



Customized Specifications are designed accordingly. Specifications are subject to change without notice. Please visit Y.S. TECH web site at <http://www.ystech.com.tw> for updated information.