

AXIAL DC FAN



http://www.etsdyn.com
 email: info@etsdyn.com
 26-27 Chartwell Drive Ind Est
 S.Wigston
 Leicester, LE18 2FL, UK

FD4020 SERIES

40x40x20mm

- Airflow: 4.80~9.10 CFM
- Static Pressure: 1.70~4.80 mm-H₂O
- Blade / Housing: Plastic Material UL 94-0 P.B.T.
- Lead Wire: UL1007 #26 AWG
- Weight: 24g

Model	Bearing	Rated Voltage	Operating Voltage Range	Power Consumption	Rated Speed	Max. Airflow	Max. Static Pressure	Noise	Life	Weight
		VDC	VDC	W	RPM	CFM	mm-H ₂ O	dB (A)	Hour	g
FD0540203B-2N	2B	5	4~7	0.55	4,000	4.80	1.70	16.7	80,000	24
FD0540205B-2N	2B		4~7	0.80	5,000	6.00	3.00	23.4	80,000	24
FD0540207B-2N	2B		4~7	1.01	6,000	7.50	4.00	28.0	75,000	24
FD1240203B-2A	2B	12	7~17	0.72	4,000	4.80	1.70	16.7	80,000	24
FD1240205B-2A	2B		7~17	1.08	5,000	6.00	3.00	23.4	80,000	24
FD1240207B-2A	2B		7~17	1.56	6,000	7.50	4.00	28.0	75,000	24
FD1240209B-2A	2B		7~17	2.16	7,000	9.10	4.80	33.5	75,000	24

● 2B: 2-ball bearing BS: 1-ball 1-sleeve bearing S: sleeve bearing

Voltage Available

05 12 24 48 53

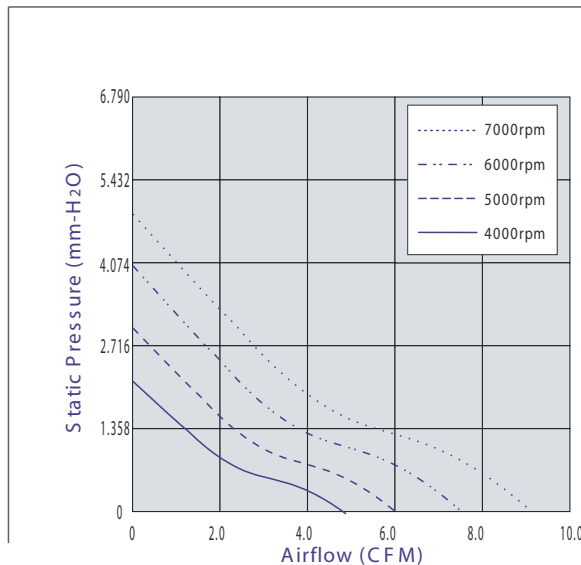
Bearing System Available

2B BS S

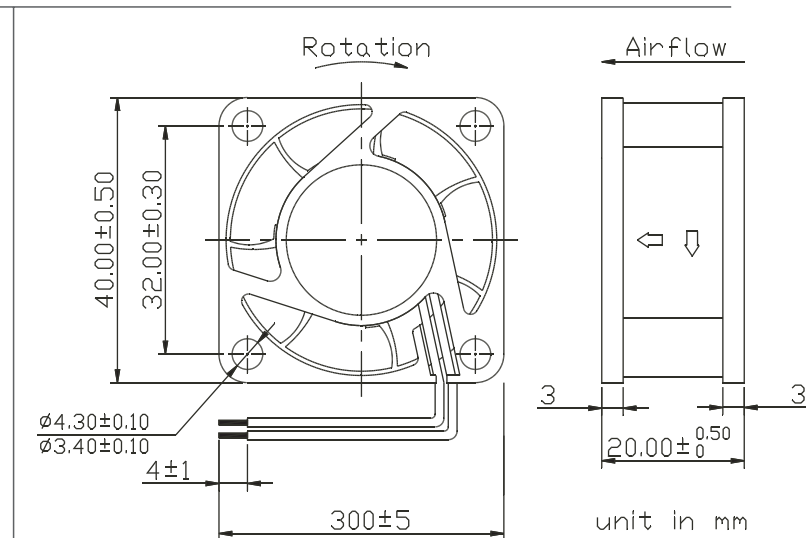
Function Available

N A I F R Q S T M V C P W

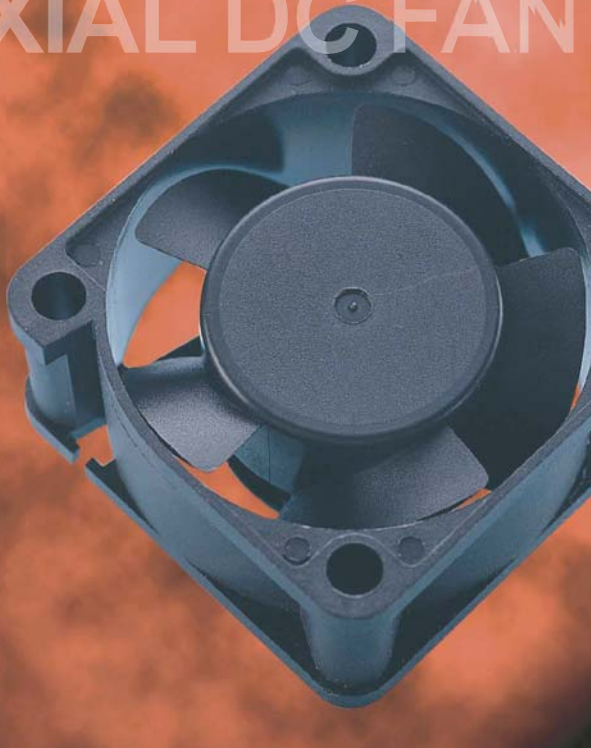
PERFORMANCE P-Q CURVE



OUTLINE DIMENSIONS



Customized Specifications are designed accordingly.
 Specifications are subject to change without notice. Please visit Y.S. TECH web site at <http://www.ys-tech.com.tw> for updated information.



Y.S. TECH



European Thermodynamics Limited
Intelligent Thermal Management

<http://www.etedyn.com>
email: info@etedyn.com
26-27 Chartwell Drive Ind Est
S.Wigston
Leicester, LE18 2FL, UK

FD4020N SERIES

40x40x20mm

- Airflow: 4.90~10.70 CFM
- Static Pressure: 2.70~8.00 mm-H₂O
- Blade / Housing: Plastic Material UL 94-0 P.B.T.
- Lead Wire: UL1007 #26 AWG
- Weight: 24 g

Model	Bearing	Rated Voltage	Operating Voltage Range	Power Consumption	Rated Speed	Max. Airflow	Max. Static Pressure	Noise	Life	Weight
		VDC	VDC	W	RPM	CFM	mm-H ₂ O	dB(A)	Hour	g
NFD1240203B-2A	2B	12	7~17	0.55	4,600	4.90	2.70	20.0	80,000	24
NFD1240205B-2A	2B		7~17	0.84	5,600	6.00	3.70	22.3	80,000	24
NFD1240207B-2A	2B		7~17	1.20	6,600	7.50	5.40	27.9	75,000	24
NFD1240209B-2F	2B		7~17	1.44	7,600	8.50	7.00	30.7	75,000	24
NFD124020BB-2F	2B		7~17	1.44	9,000	10.70	8.00	35.3	75,000	24
NFD2440205B-2A	2B	24	12~33	1.20	5,600	6.00	3.80	26.5	80,000	24
NFD2440207B-2A	2B		12~33	1.44	6,600	7.50	5.40	31.6	75,000	24
NFD2440207B-2F	2B		12~33	1.44	6,600	7.50	5.40	31.6	75,000	24
NFD2440209B-2F	2B		12~33	1.92	7,600	8.50	7.00	30.7	75,000	24

● 2B: 2-ball bearing BS: 1-ball 1-sleeve bearing S: sleeve bearing

Voltage Available

05 12 24 48 53

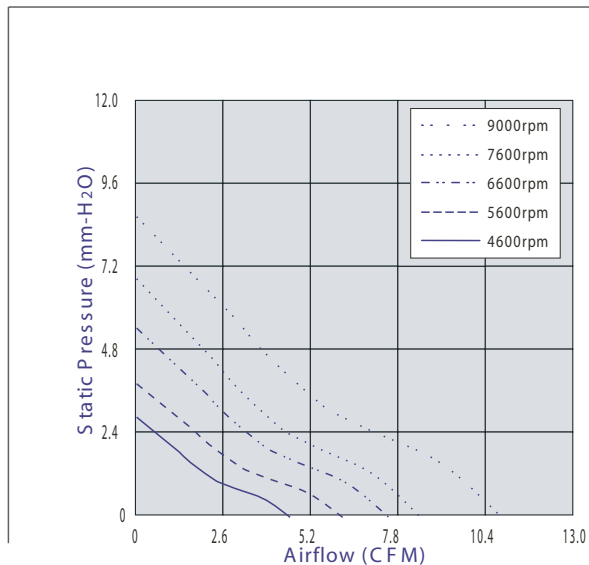
Bearing System Available

2B BS S

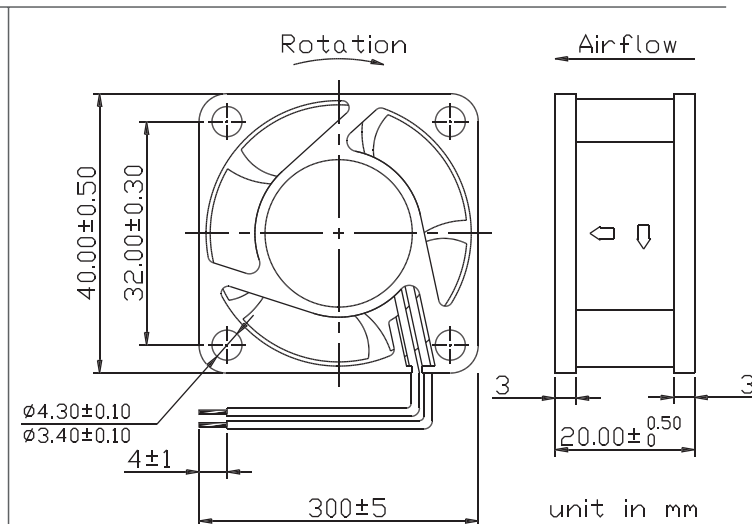
Function Available

N A I F R Q S T M V C P W

PERFORMANCE P-Q CURVE



OUTLINE DIMENSIONS



Customized Specifications are designed accordingly.
Specifications are subject to change without notice. Please visit Y.S. TECH web site at <http://www.ystech.com.tw> for updated information.