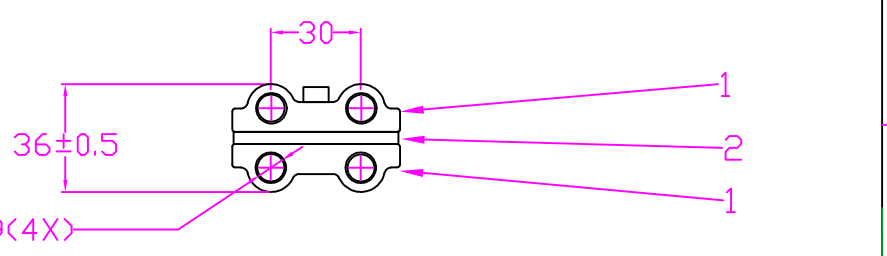
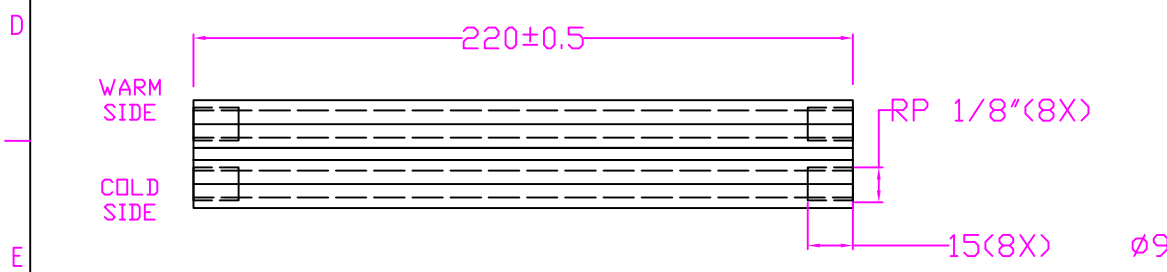



SPECIFICATIONS (Th=32°C)	CODE #	DESCRIPTION
Heat Transfer Cold side	L	Liquid flow cooling
Heat Transfer Warm side	L	Liquid heat removal
Cascade	-	
Cooling Effect	180	180 W at dT=0°C and Th=32°C
Voltage Nominal	24	24 VDC (29,5 VDC MAX)
Current Nominal TE-Module(s)		6,2 A at dT=0°C PE-161-12-15-S (2SX2P=4X)
Fan(s) Cold side	0	None
Fan(s) Warm side	0	None
Thermostat / Regulation & Sensor	0	None
Thermostat Settings Trimmable Accuracy & Hysteresis	0	None
Thermostat Position & Casing	0	None
Options: Protections Rapid Cooling / Economy	0	None None
Weight		0,9 kg net
Overheating Thermostat		75°C±5°C on warm side heat sink surface
Max. operating Temperature		69°C warm side liquid
Enclosed		-
Packing		Individual cardboard box



POS.	ITEM No.:	DESCRIPTION	QTY	NOTE
1	Heat sink	Anodised Alu, silver	1+1	Turbulators inserted
2	Seal	Polyethylene	1	

Qty/Product:		Material:		Project: Standard	
Designed by: Pavel Cech	Approved by / sign.: Hans Lindberg	Customer:	Date/Rev.No: S-99-07-26	Scale 1	
		Supercool AB Box 27, 40120 Göteborg, Sweden tel:+46 31 420530, fax:+46 31 247909 e-mail: pavel@supercool.se www.supercool.se		<b>COOLING-ASSEMBLY</b>	
LL-180-24-00-00-00			SS-ISO2768-1	Sheet 1/1	

